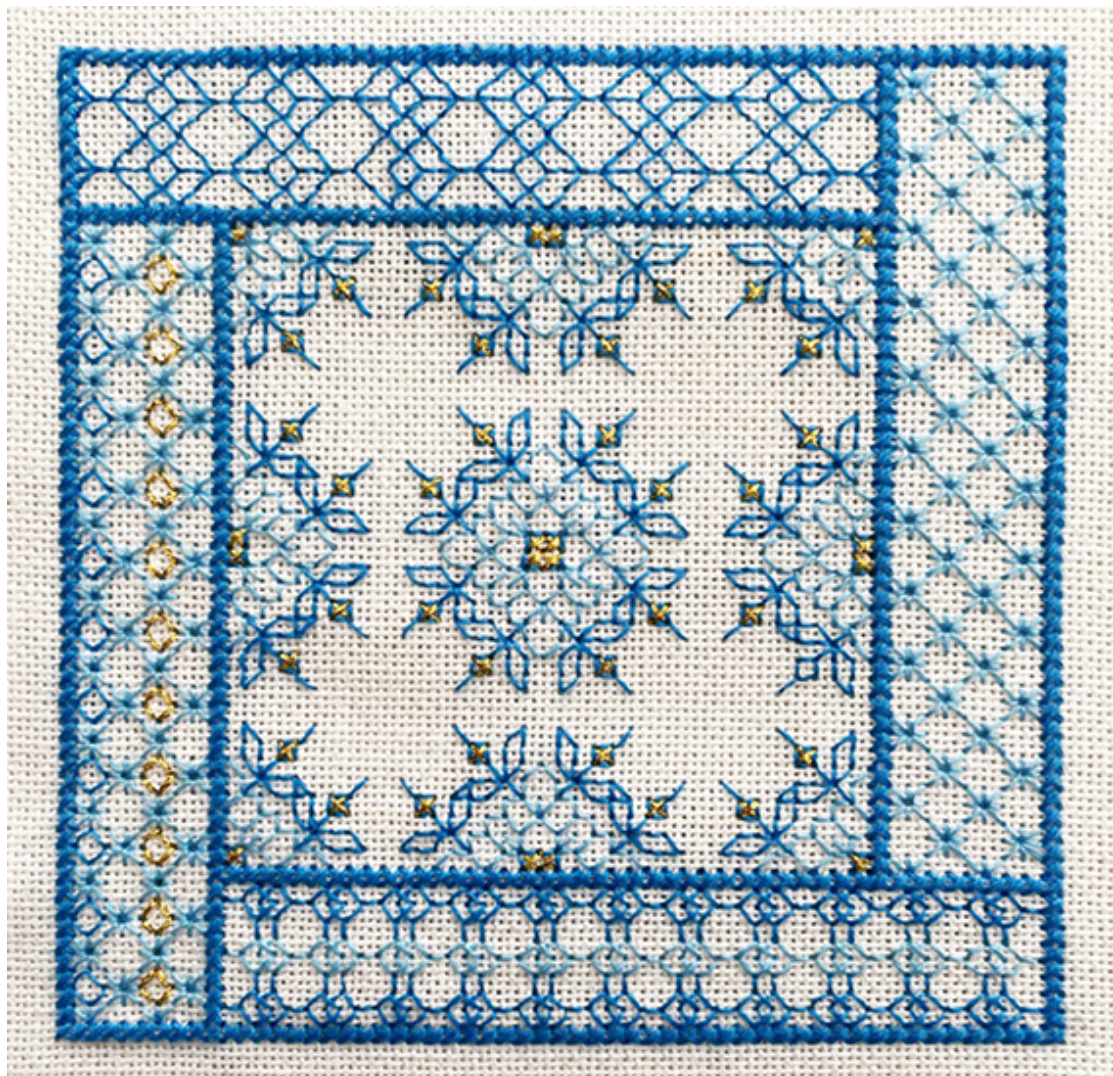


# Lakeside Needlecraft

---

Elizabeth Almond, Blackwork Journey

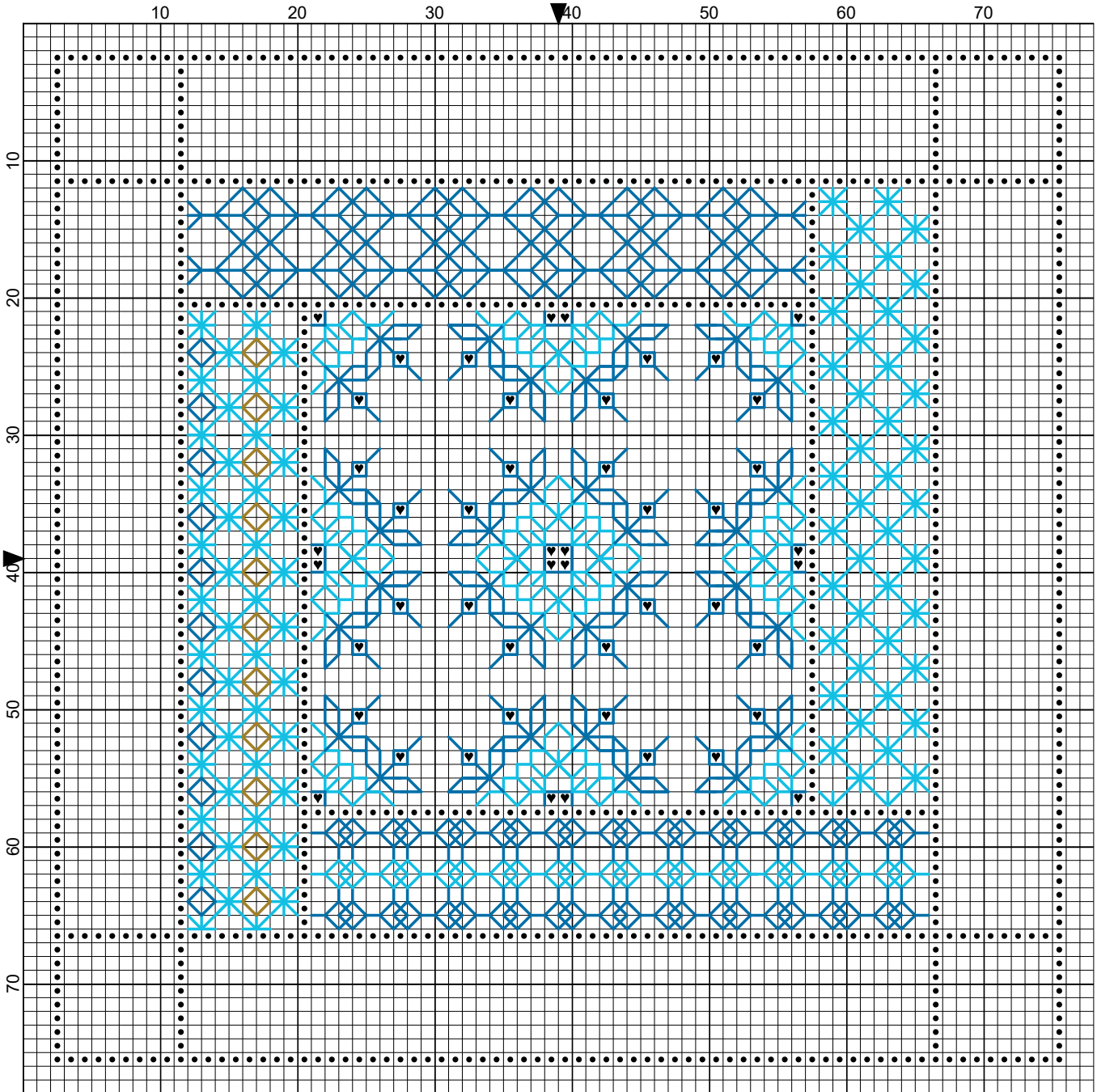
---



FREE SAL  
Blackwork in  
Blue Part 5

find us at:- [lakesideneedlecraft.co.uk](http://lakesideneedlecraft.co.uk) | facebook - Lakeside Needlecraft

# Blackwork in Blue Part 5



Elizabeth Almond

Legend:

DLE-E3852    
  DMC-995

Backstitches:



DLE-E3852    
  DMC-995    
  DMC-996

# Blackwork in Blue




---

**Author:** Elizabeth Almond  
**Copyright:** Elizabeth Almond  
**Grid Size:** 78W x 78H  
**Design Area:** 5.29" x 5.29" (74 x 74 stitches)

## Legend:

 [2] DLE E3852 Dark Gold  
 [2] DMC 995 electric blue - dk

## Backstitch Lines:

 DLE-E3852 Dark Gold  
 DMC-995 electric blue - dk  
 DMC-996 electric blue - md

The Blackwork in Blue sampler has 9 parts that will be filled with blackwork patterns ranging from delicate lacy designs to heavier filler patterns. Work the design in black and gold or use the colours of your choice to create this pretty design.

## Material:

Zweigart 28 count evenweave or, 14 count Aida, 11.5 x 11.5 inches

## Thread:

DMC stranded floss:

DMC 995 - one skein, DMC 996 - one skein

DMC Light Effects E3852 Dark gold, one skein or, Rainbow Gallery Petite Treasure Braid PB01 bright gold, one card

Note: DMC 939 Navy blue, very dark can be used as an alternative colour to the gold metallic thread.

Tapestry Needle No.24

Small embroidery ring

## Stitches used:

Back stitch, one strand

Cross stitch, two strands

## Method:

1. Fold the fabric into quarters and find the centre point.
2. Work from the centre of the design outwards using ONE strand of cotton for the back stitch.
3. Complete each band in turn and add the final cross stitch border.
4. Place the finished embroidery face down on a soft towel and press lightly.

I hope you enjoy stitching this design as much as I have enjoyed creating it.

If you have any queries please contact:

[info@lakesideneedlecraft.co.uk](mailto:info@lakesideneedlecraft.co.uk)